



CLASSIC-PIRATES.COM

PART REQUESTS

Tom Jacobs (Bonaparte), April 2010

Introduction

Classic-Pirates.com has emerged as the largest and most affluent online community dedicated to LEGO Pirates.

Our Pirate MOC Forum is a hive of activity with hundreds of eager enthusiasts sharing their ideas and Pirate LEGO creations. Their contributions have been phenomenal! Ranging from expansive dioramas to simplest, yet most effective vignettes, and everything in between.

To expand building possibilities Classic-Pirates.com conducted a survey to ascertain which parts would be most useful for future Pirate LEGO creations.

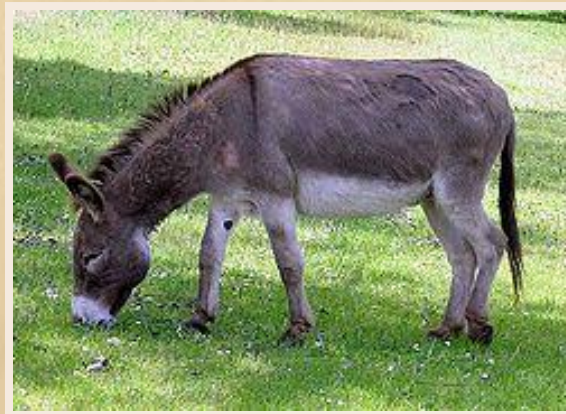
The result is this presentation in which we've meticulously collated the fantastic ideas provided by members of the Classic-Pirates.com Community.

Tom Jacobs (Bonaparte)
Classic-Pirates.com Ambassador

Livestock

Due to a strong desire for more trade/merchant orientated sets, livestock was suggested.

Animals including sheep, chickens, goats, and donkeys were among the most popular suggestions.



Wigs

For greater diversity in minifigure appearance, particularly to distinguish figures of significance, wigs were suggested. These could be used to dignify aristocrats, governors, admirals, generals, captains and the like.



The ability to place hats upon wigs would also allow for additional customization.

A larger variety of hats



Bicornes and tricorns with more colour



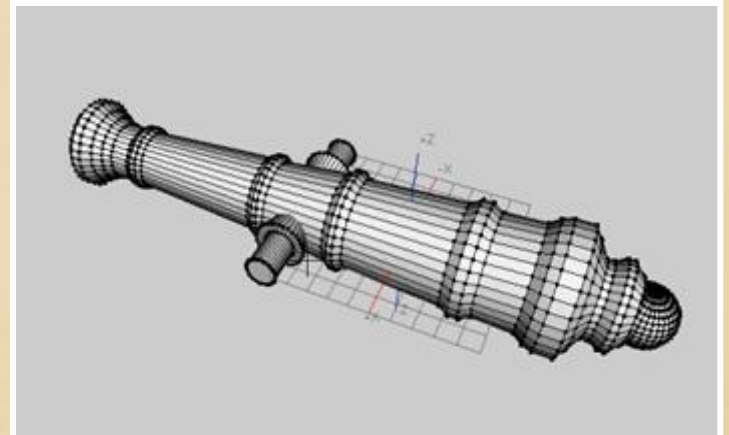
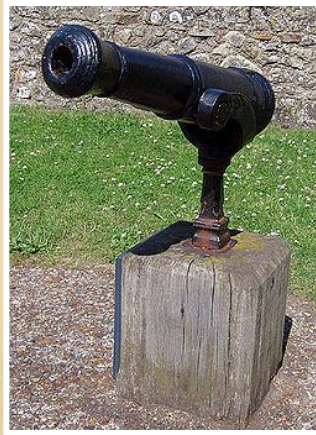
Cocked hats for soldiers



Cavalier hats



Naval Artillery



In addition to the existing cannons smaller weaponry for ships was suggested. Examples include carronades, mortars and swivel guns.

Hand Weaponry



Survey participants noted the current LEGO knife isn't best suited to the Pirate theme.

A knife with a longer blade, such as a dirk was indentified as a more appropriate hand blade.

A more diverse range of arsenal was also requested, muskets in particular were a popular suggestion, plus a request for a more realistic flintlock pistol.



Scabbards & Holsters

A system that allows minifigures to 'wear' their weaponry. This could be achieved by designing scabbards or holsters for the various LEGO swords, cutlasses and firearms.



Bayonets



Bayonets which can be connected to the current LEGO rifle or the proposed musket.

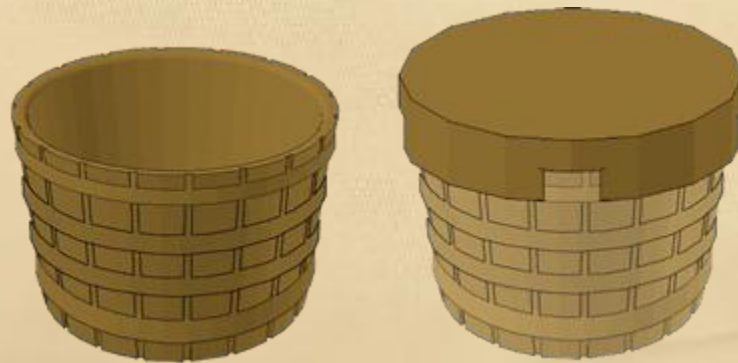
Globes



Baskets

A smaller basket, 2 x 2 x 2 in deminsion, with a Technic axle hole in the bottom and the ability to place a 2 x 2 round plate/tile on as a lid.

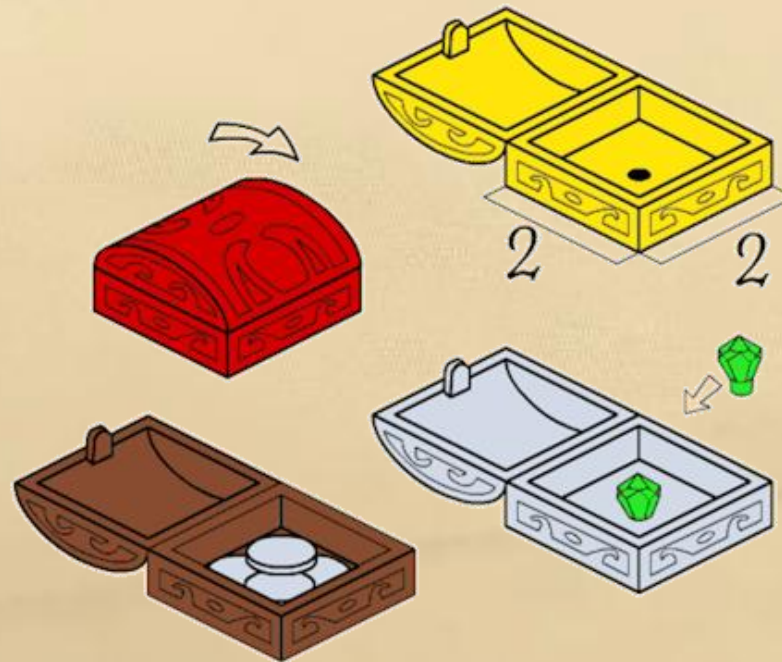
In tan the pattern on the side could be cross-hatch to resemble a wicker basket, while in brown it could be similar to the current barrel but with silver ribs.



Example Concepts

Small scale treasure chest

A small scale 2x2 base chest with a hole in the lower half to insert gems or other LEGO accessories.



Other Accessories

Other suggestions for new accessories included compasses which fit into the hands of minifigures, steins, rum bottles, jugs, and grain sacks.

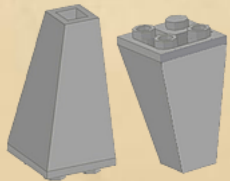


Other requests for new parts

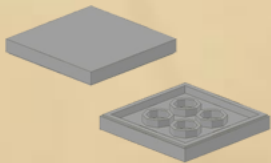
To expand construction possibilities participants suggested numerous LEGO parts they would find useful in their creations.



1 x 1 plates with studs
on both sides



Slope Brick 75 2 x 2 x 3
Inverted Double Convex



3 x 3 plates



Slope Inverted 75 2 x 2 x 3
Double Convex



Slope Inverted 45 2 x 2
Double Concave

Return of older parts

Numerous requests came for the return of parts previously found in Pirate LEGO sets. In some instances these parts have been superseded by modern counterparts but are considered less effective, while other useful parts are no longer in production in any form.

These include:

- Self-assembly palm tree trunks and leaves
- Brown treasure chests
- The original skeleton arm hinges
- Rigging and rope ladders
- Ship Compasses
- Blue Treasure Maps

Acknowledgements

Bonaparte

LEGO Ambassador & Team Research Leader

Mister Phes

Supplemental research, proofreading, layout and title graphics

SlyOwl

Various LEGO part concept diagrams

Woody64

3D model of swivel gun

David Thomsen

2 x 2 chest diagram